

SHAPE THE FUTURE



BECOME A GOVERNOR!

Our Values

Compassion

Compassion is caring about others, behaving towards them with humanity, generosity, and concern, and caring about other people's struggles. It is a skill which has benefits; treating others with compassion means they are likely to treat you, and others, back in kind.

We recognise the uniqueness of each circumstance and every child in the Trust, liaising closely with families and work to show appropriate compassion for our pupils and community.

Ambition

We work hard to help pupils develop a strong sense of ambition: the appetite for challenge and the determination to look beyond the horizon for inspiration. Whilst we recognise that children have different talents and abilities, we nevertheless expect each pupil to work hard and make significant and tangible progress. Our ultimate aim is to help them to achieve the best results possible, providing a wide range of options for their next stage in life.

Teamwork

Teamwork is an essential communication and social skill and includes compromise, collective effort, active listening, effective speaking and providing support for a group. We encourage our pupils to learn how to listen and be independent, in order to perform their individual roles and function as a cohesive unit, and how to respectfully and confidently express their ideas and opinions effectively in a group setting.

Our shared goal is to ensure that pupils leave us not only with excellent exam results, but also with confidence, resilience and the ability to make their mark as young people heading out into the world.

Welcome!

Chulmleigh Academy Trust is entering an exciting new chapter. As we establish Local Governing Boards across our four schools, we are creating new opportunities for people in our community to help shape the future of education.

This is more than a volunteer role. It is an opportunity to influence strategy, support leadership, champion our values, and ensure every child thrives.

We are building strong, skilled, diverse governing boards that reflect and serve our communities. If you care about education, want to make a meaningful difference, and are ready to contribute your experience and perspective, we would love to hear from you!

What is a Local Governor?

Local Governors are responsible for supporting, challenging, and monitoring the work of our schools, working in partnership with the Trust Board to uphold the highest standards. Key responsibilities include:

- Monitoring the school's educational performance and pupil outcomes against its school improvement plan.
- Contributing to the review of school and Trust policies.
- Ensuring the school complies with statutory requirements.
- Acting as a critical friend to the school leadership team.
- Supporting community engagement and accountability.
- Undertaking additional responsibility, such as key link roles and/or participating in governance panels.



Purpose and Remit

Local Governors help ensure that:

- Decisions are made in the best interests of pupils.
- The school's ethos, vision, and values are upheld.
- Resources are used efficiently and effectively.
- The school is accountable to the local community and the Trust Board.

Effective governance aims to focus on impact and outcomes, understanding that governance is a collective responsibility, and thinking strategically, rather than operationally.

Aims

Our Local Governors aim to:

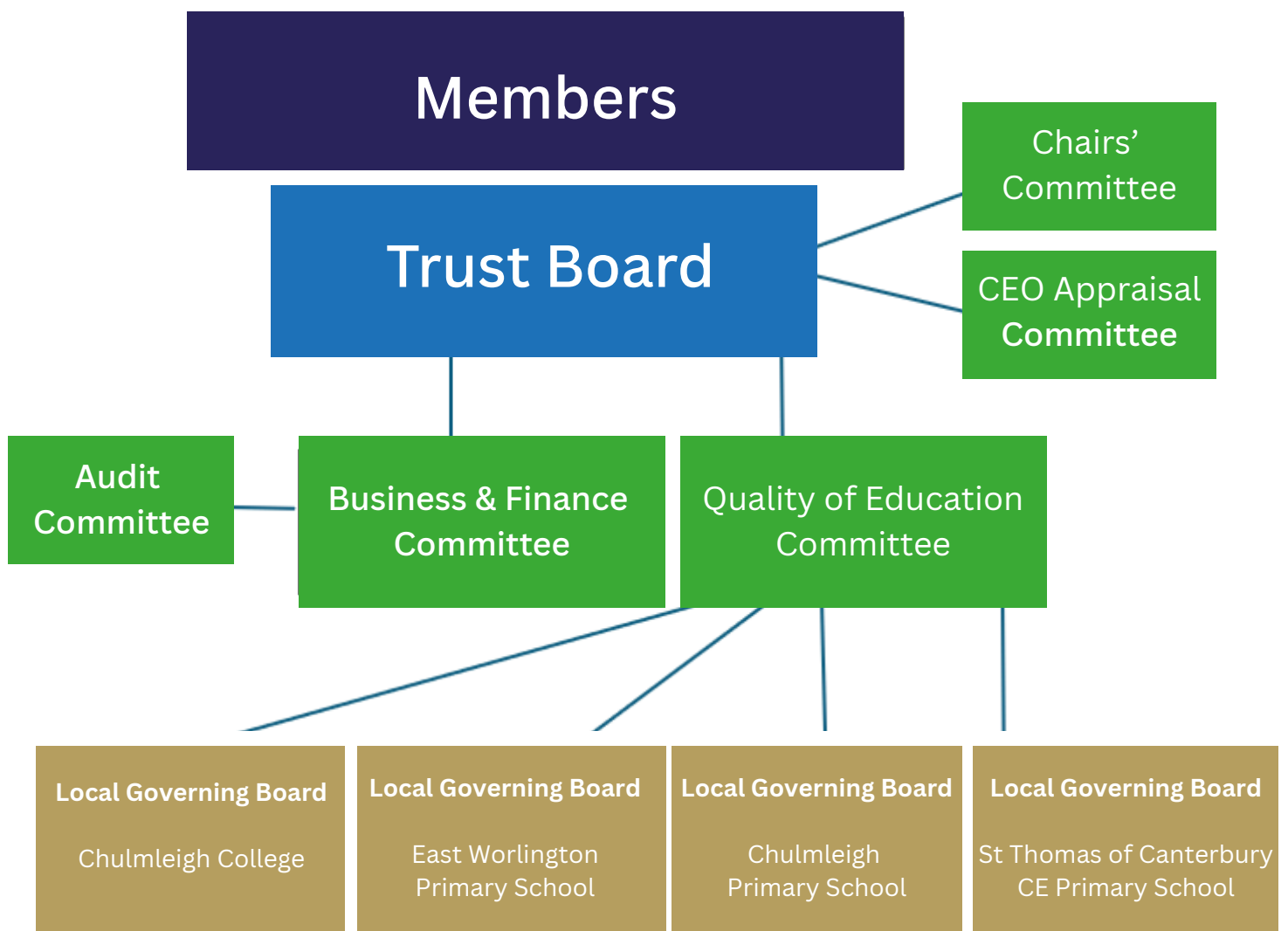
- Support high standards of teaching, learning, and leadership.
- Promote a safe, inclusive, and positive environment for all pupils.
- Strengthen links between the school, parents, and wider community.
- Help drive innovation and improvement through constructive oversight.



Governance Structure

Chulmleigh Academy Trust's governance includes:

- **Members** – the guardians of the Trust constitution.
- **Trust Board** – oversee the overall governance of the Trust.
- **Committees of the Trust Board** – delegated to carry out some of the Trust's governance functions.
- **Local Governing Boards** – provide school level oversight and support.



Membership of Each Local Governing Board is as follows:

- **The Head of School**
- **Elected Governors:**
 - i) Up to two parent members
 - ii) One staff member
- **Appointed Governors**
 - i) Up to four community governors for non-church schools
 - ii) Up to two community governors for church schools
 - iii) Up to two foundation governors for church schools



Who Can Apply

You don't need to be an education expert to become a Local Governor. We value a broad range of skills, experiences, and perspectives.

We welcome applications from parents and carers, staff members, professionals from any sectors, community leaders, individuals from diverse backgrounds and under-represented groups, and local church representatives.

We are looking for individuals who are:

- Passionate about improving outcomes for children and young people.
- Able to ask thoughtful, constructive questions.
- Willing to offer support and appropriate challenge.
- Committed to equality, inclusion and high standards.
- Good listeners and effective communicators.
- Team players who respect collective decision-making.
- Discreet and able to handle confidential information.
- Reliable, and able to commit time for meetings, school visits, and training.
- Bring relevant skills, knowledge, or experience (finance, HR, safeguarding, curriculum, leadership, education, etc.)



How to Apply

Parent or Staff Governors

If you are interested in applying for a parent governor or staff governor position at your school, election letters inviting nominations for these positions will be sent out to the school community.

Community or Foundation Governors

If you are interested in applying for a community or foundation local governor role, please do submit an Expressions of Interest by email to the Clerk to Trustees. The process is listed below:



Expressions of Interest form	Please submit an Expressions of Interest by email to the Clerk to Trustees at: clerk@chulmleigh.devon.sch.uk . Please do include the name of the school that you are interested in.	By 12 noon, Tuesday 31st March
Tour of the School/ Meet the Head	You will then be invited to come into the school to meet with the Head, have a tour, and find out more about the role.	
Application Form	If you are still interested in the role after the visit to the school, you will be invited to complete an application form and submit.	
Trust Board Approval	Application forms will be submitted to the Trust Board for a final decision.	
Decision Communicated	You will be contacted after May half term with the decision.	

Need More Information?

Time Commitment and Meeting Attendance

Local Governors will meet once every half term, in-person at the school, usually after school hours.

Local Governors will prepare for all meetings in advance by reading the agenda and papers circulated to the board one week before the meeting via the governance portal *Governor Hub*.

Local Governors may also be required to undertake occasional school visits with an agreed remit or focus and attend training sessions.

Training and Support

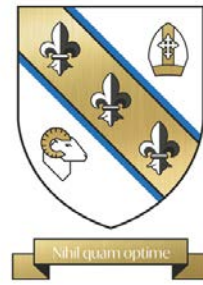
Don't worry- you won't be expected to know everything before you start! We will provide:

- Induction programme for all new local governors
- Access to ongoing training
- Support from the Trust's governance clerk and school leadership

Contact / More Information

If you have any further questions, please do contact our Clerk to Trustees by email: clerk@chulmleigh.devon.sch.uk





Chulmleigh College
Nothing but our best

Chulmleigh College

Chulmleigh College is a fully comprehensive secondary school for pupils aged 11–16, with a clear mission: to provide an excellent education that secures outstanding GCSE outcomes and equips every young person with the skills, confidence and resilience to thrive in adult life.

www.chulmleigh.devon.sch.uk

Tel: 01769 580215

Email: admin@chulmleigh.devon.sch.uk

Address: Chulmleigh College, Chulmleigh, Devon, EX18 7AA



**Chulmleigh
Primary School
& Nursery**

Chulmleigh Primary School

Chulmleigh Primary School provides high-quality education for children aged 2–11 in our rural community. Located in the heart of Chulmleigh, we serve families from the town, neighbouring villages and the wider area.

www.chulmleigh.devon.sch.uk

Tel: 01769 580535

Email: admin@chulmleigh-primary.devon.sch.uk

Address: Chulmleigh Primary School, Beacon Road, Chulmleigh, Devon, EX18 7AA



East Worlington Primary School & Nursery

East Worlington Primary School

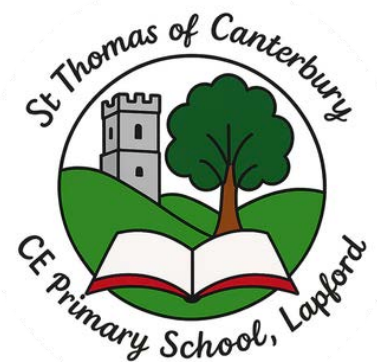
East Worlington Primary School and Nursery provides high-quality education and care for children aged 9 months to 11 years, at the heart of the village community.

www.east-worlington-primary.devon.sch.uk

Tel: 01884 861722

Email: admin@east-worlington-primary.devon.sch.uk

Address: East Worlington Primary School, East Worlington, Devon, EX17 4TS



St Thomas of Canterbury CE Primary School, Lapford

St Thomas of Canterbury CE Primary School, Lapford is situated between the town of CREDITON and BARNSTAPLE in North Devon. It is a small school for children aged 9 months -11 years, in a warm and friendly rural village with strong community links.

www.stc-primary.devon.sch.uk

Tel: 01363 83292

Email: admin@stc-primary.devon.sch.uk

Address: St Thomas of Canterbury CE Primary School, Lapford,
Eastington Lane, Lapford, CREDITON, Devon, EX17 6QE

SHAPE THE FUTURE



BECOME A GOVERNOR!